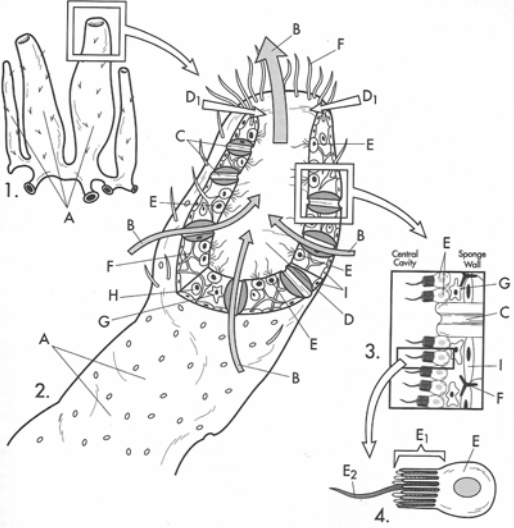
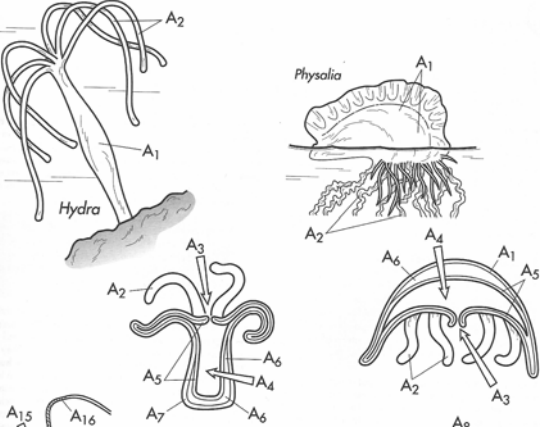
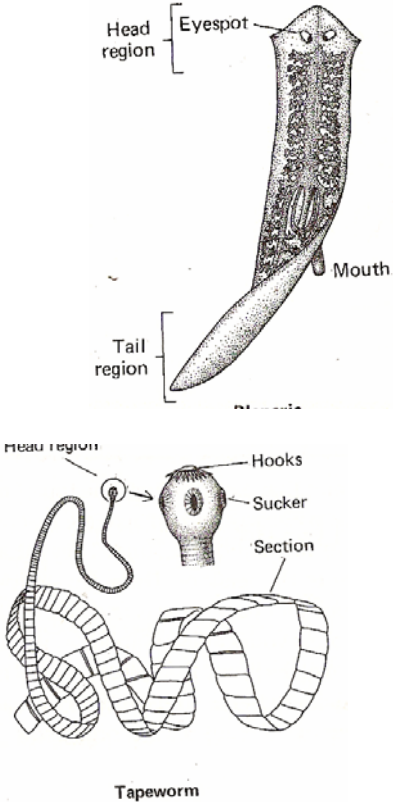


# Kingdom Animalia

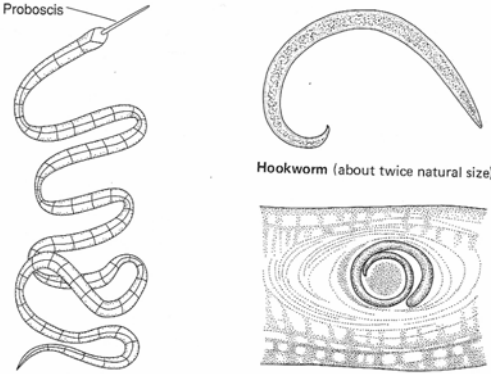
## ANIMAL PHYLA & GENERAL CHARACTERISTICS

<p>Porifera</p>		 <p>The diagram illustrates the anatomy of a sponge. It shows the external surface with pores (A) and the internal canal system (B). A cross-section reveals the central cavity (C) and the sponge wall (D). Detailed views show the cellular structure, including choanocytes (E) with flagella (F) and pinacocytes (G). The diagram also shows the arrangement of cells in the sponge wall (H) and the central cavity (I). A detailed view of a choanocyte shows its flagella (E1) and the central cavity (E2).</p>
<p>Cnidaria</p>		 <p>The diagram shows the body plans of Hydra and Physalia. Hydra is a tubular organism with tentacles (A1) at the top and a foot (A2) at the bottom. Physalia is a colonial organism with a bell-shaped body (A1) and a float (A2). The diagrams also show the internal structures of these organisms, including the gastrovascular cavity (A3) and the mesenteries (A4, A5, A6, A7). The diagram also shows the arrangement of cells in the body wall (A8, A9, A10, A11, A12, A13, A14, A15, A16).</p>

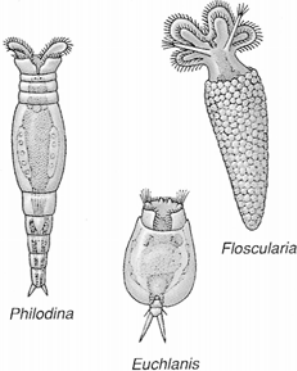
Platyhelminthes



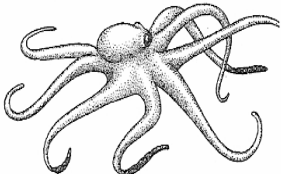
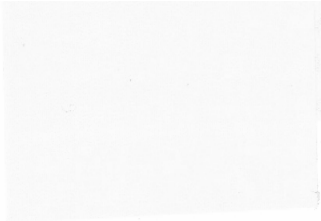
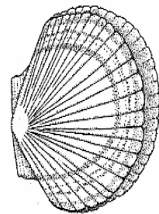
Nematoda



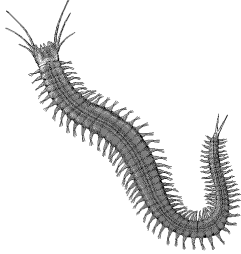
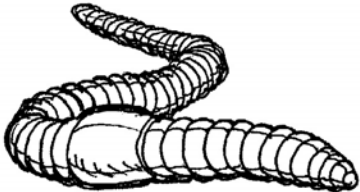
Rotifera



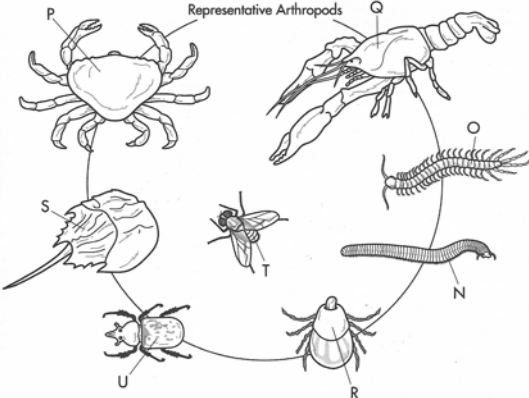
Mollusca



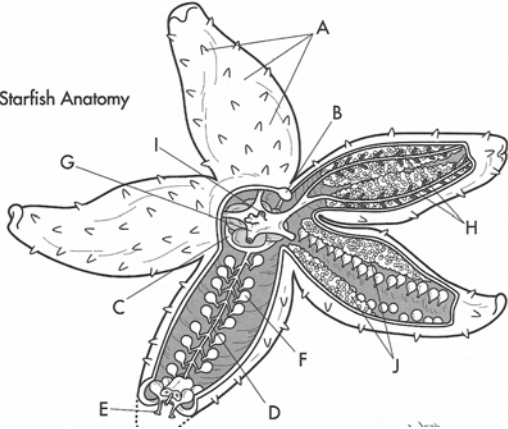
Annelida



Arthropoda



Echinodermata



Chordata

